

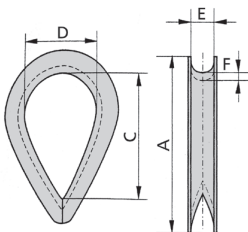
ACCESSORI FUNE

Redance pesanti simili a DIN 6899 B tipo K

K type heavy thimbles generally to DIN 6899 B

Finitura: zincatura a caldo
Diametro 5 e 6: zincatura elettrolitica

Finish: hot deep galvanized
Diameter 5 and 6: electrolytic galvanized

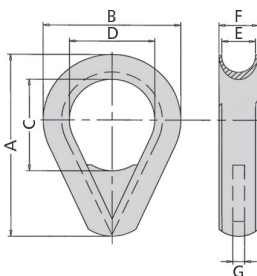


Codice Code	Fune Rope		Dimensioni Dimensions				Peso Weight
	Ø mm	A mm	C mm	D mm	E mm	F mm	Kg
AREDLM05	5	38	25	16	6	2,4	0,016
AREDLM06	6	44	28	18	7	2,4	0,016
AREDLM07	7	51	32	20	8	2,8	0,030
AREDLM09	8-9	57	38	24	10	3,1	0,047
AREDLM11	10-11	64	45	28	12	3,3	0,068
AREDLM13	12-13	76	51	32	13	3,7	0,100
AREDLM15	14-15	83	58	36	16	3,8	0,150
AREDLM16	16	89	61	38	17	4,7	0,180
AREDLM18	18	102	72	45	20	5,7	0,290
AREDLM20	20	114	80	50	22	5,7	0,320
AREDLM22	22	127	90	56	24	6,5	0,470
AREDLM24	24	140	99	62	26	6,8	0,600
AREDLM26	26	152	112	70	28	8	0,800
AREDLM28	28	165	120	75	30	8	1,100
AREDLM30	30	178	128	80	32	8	1,230
AREDLM32	32	203	152	95	34	8,5	1,560

Redance con rinforzo tipo K2B

K2B type reinforced thimbles

Finitura: zincatura a caldo
Finish: hot deep galvanized

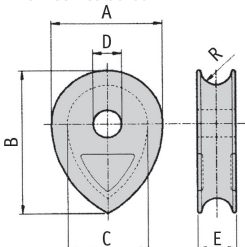


Codice Code	Fune Rope		Dimensioni Dimensions							Grillo max applicabile Max shackle allowed	Peso Weight
	Ø mm	Ø inches	A inches	B mm	C mm	D mm	E mm	F mm	G mm	t	Kg
AREDK2B16	16	5/8	4	75	50	50	17	22	6	4,75	0,4
AREDK2B18	18	3/4	4 1/2	85	50	53	19	25	6	4,75	0,5
AREDK2B20	20	13/16	5	100	60	60	21	29	8	6,5	0,8
AREDK2B22	22	7/8	5 1/2	110	60	65	23	33	8	6,5	0,9
AREDK2B24	24	15/16	6	115	70	70	25	34	8	8,5	1
AREDK2B28	28	1 1/8	7	135	75	80	30	38	10	12	1,7
AREDK2B32	32	1 1/4	8	155	80	100	33	44	10	17	2,5
AREDK2B36	36	1 7/16	9	175	110	115	38	49	10	25	4
AREDK2B40	40	1 5/8	10	190	120	120	41	52	15	35	4,5
AREDK2B44	44	1 3/4	11	210	120	130	46	60	15	35	7
AREDK2B50	50	2	12	245	140	145	52	65	15	42,5	8,3
AREDK2B54	54	2 1/8	14	260	155	155	60	72	20	55	12,5
AREDK2B68	68	2 3/4	17	310	200	190	70	84	20	85	18
AREDK2B80	78	3 1/8	19	350	235	230	81	119	20	120	31
AREDK2B90	90	3 5/8	22	395	240	255	92	130	20	150	40
AREDK2B100	100	4	24	430	275	280	105	145	25	150	49
AREDK2B120	120	4 3/4	26	450	295	285	120	155	30	150	54

Redance piene in ghisa

Cast iron thimbles

Finitura: naturale
Finish: self coloured



Codice Code	Fune Rope	Dimensioni Dimensions						Peso Weight
	Ø mm	A mm	B mm	C mm	D mm	E mm	R mm	Kg
ARPN01	20/21	84	113	61	26/31/36	30	11,5	0,9
ARPN02	22/24	90	120	65	36/41/46	32	12,5	1,1
ARPN03	26/27	105	140	76	31/41	37	14,5	1,9
ARPN04	28/30	120	160	87	31/41/46/56	38	16,5	2,8
ARPN05	32/34	140	190	105	41/46/51	44	17,5	4,3
ARPN06	36/38	153	210	170	51/56	55	20	6,1